

# Concrex<sup>®</sup> Sub Zero

## For essential floor repairs during the winter months

Watco Concrex Sub Zero is an exceptionally strong polyaspartic based resin repair mortar. Suitable for essential repairs during the winter months in areas where the temperature could be as low as minus 20°C.

It is ideal for thin section repairs and feather edge repairs which have to be undertaken in freezing conditions. Watco Concrex Sub Zero incorporates polyaspartic technology, has excellent strength and chemical resistance and can be applied in cold areas where ordinary repair mortars would fail. It is ideal for repairs to any unheated, internal or external area and is suitable for application to concrete, metal and sand & cement.



### Areas of use:

- Unheated areas, inside or outside
- Freezer and chiller room floors

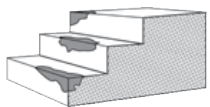
### Features:

- Heavy duty polyaspartic resin repair mortar
- Exceptionally durable for heavy traffic areas
- Can be used at temperatures as low as minus 20°C
- Repairs can be feather edged
- Chemical resistant and non-dusting
- Can be applied to concrete and metal

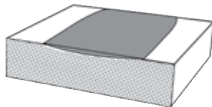


For more great products  
in the Concrex<sup>®</sup> range  
[click here](#)

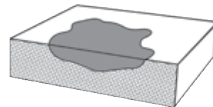
### Where to use Watco Concrex<sup>®</sup> Sub Zero



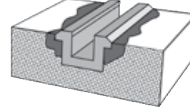
Damaged steps



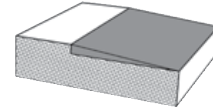
Worn floors



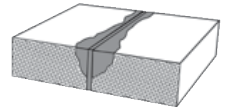
Holed floors



Fitting guide rails



Different levels



Spalled expansion joints

## Need help? Speak to the experts

Our dedicated and professional team are here to help you get the best results for your project. They will talk you through the preparation and application stages when using **Concrex<sup>®</sup> Sub Zero**.

Call our expert team on: **01483 418 418** (Weekdays 8:00am - 5:30pm. Saturday 9:00am - 12:00pm)



# Concrex<sup>®</sup> Sub Zero

## 1 Priming

A primer is not usually required when filling holes in concrete floors or resurfacing rough or damaged concrete. Watco Tack Coat Sub Zero adhesive primer is recommended when using Watco Concrex Sub Zero as a thin section screed over smooth surfaces. It is also recommended when repairing intricate/high impact areas, such as broken floor joint edges and damaged step nosings.

## 2 Mixing

Each pack contains one tin of curing agent, one tin of resin and a blended aggregate.

Tip the blended aggregate onto a mixing board. Empty the contents of the small tin into the larger tin and mix together thoroughly. Empty the mixed components onto the aggregate and mix using a trowel. The more thorough the mixing, the 'wetter', smoother and more manageable the mix becomes. Alternatively, you can knead the mixture by hand wearing suitable gloves.

It is important to mix thoroughly until you achieve a consistent colour.

## 3 Application

Trowel the mortar firmly into the repair and finish with a trowel or float. To get a good, smooth finish, regularly wipe the surface of the trowel with a cloth dampened with white spirit.

Watco Concrex Sub Zero is normally applied at 5mm - 50mm thick but repairs can be feather edged if most of the repair is at least 5mm thick. For repairs deeper than 50mm, apply in separate layers allowing each to cure before the next is applied.

## 4 Safety

A detailed Material Safety Data Sheet is available.

## 5 Ordering

Available direct from Watco UK Limited and through agents worldwide. All Watco products are sold subject to the Company's Standard Conditions of Sale.

The Company and its representatives are often asked to comment on potential uses of Watco products which differ from those described in the Company's data sheets. Whilst in such cases the Company and its representatives will always try to offer helpful and constructive advice, the Company cannot be held responsible for the results of such uses unless they are specifically confirmed in writing by Watco.

# Concrex<sup>®</sup> Sub Zero

## Specification

<b>Composition</b>	A polyaspartic of a based repair mortar comprising of a pigmented repair resin, clear curing agent and a blended aggregate
<b>Colour</b>	Mid grey.
<b>Primer Required</b>	See section headed 'Priming'.
<b>Number of Components</b>	3
<b>Finish</b>	Smooth, impervious surface.
<b>Usage Interior/Exterior</b>	Interior & exterior
<b>Application Tools</b>	Steel float or trowel
<b>Suitable For</b>	Concrete, sand & cement and metal
<b>Pack Sizes</b>	10kg
<b>Coverage</b>	Approximately 1.2m <sup>2</sup> per 10kg at 5mm thick.
<b>Shrinkage (on cure)</b>	Negligible
<b>Damaged by Frost</b>	No
<b>Can be Feather edged</b>	Yes, around the edge of a repair – full strength at 5mm thick.
<b>Application Thickness</b>	Up to 50mm for hole filling only. Do not use at more than 15mm for screeding unless building up layers.
<b>Curing Time</b>	3 - 5 hours at 15°C. 12 - 16 hours at 0°C. 48 hours at minus 20°C. Full chemical resistance is achieved after 7 days.
<b>Cleaning</b>	When fully cured, proprietary detergents or degreasants may be used to clean the surface.
<b>Pot Life</b>	30-60 minutes depending on temperature. If Concrex Sub Zero is used past its working life, trowelling will become difficult and adhesion will be reduced
<b>Cleaning Tools</b>	Equipment used for mixing and applying should be wiped clean with white spirit or a similar solvent before the Concrex Sub Zero cures
<b>Shelf Life</b>	12 months in unopened containers.
<b>Storage</b>	Store at a temperature between 10°C and 30°C.
<b>Safety</b>	All product labels provide general safety information. Material Safety Data Sheets are available. Food products must be removed from the area during application and cure.
<b>Chemical Resistance</b>	Excellent resistance to spillages of many chemicals commonly used in industry, including (at 20°C) paraffin, petrol, fuel oils, alcohols, dilute nitric, sulphuric and hydrochloric acids, sugar solutions, oxalic acid, citric acid, caustic soda, salt solutions, cutting oils, mineral oils. Advice given regarding other chemicals.