



Direct-to-Substrate

Corrosion Solutions

DTS





Direct-to-Substrate

Corrosion Solutions

DTS

What is Direct-To-Substrate (DTS)?

The Libert Paints DTS is a high-performance industrial paint range with universal adhesion. Cryltane DTS is a two component acrylic polyurethane paint with a very good adhesion on various types of surfaces:

- Metal surfaces such as steel, aluminium,
- galvanised surfaces, stainless steel, CRS...
- Synthetic substrates
- Mineral substrates such as walls, concrete, ...

The system is a “typical” primer and top coat in “one” whereby as customer you can work with a single paint system. Depending on the degree of gloss, you choose a specific product. Depending on the desired degree of protection, you choose one or more layers.

Our DTS range contains only 4 products for all possible applications:

- **Cryltane DTS 20**
- **Cryltane DTS 40 (previously AC Satin)**
- **Cryltane DTS 60**
- **Cryltane DTS 80 (previously AC Gloss)**

A paint for many surfaces: so a real ‘all-round-er’!



PROTECTION MADE EASY

 **Libert**
industrial paints



Direct-to-Substrate

Corrosion Solutions

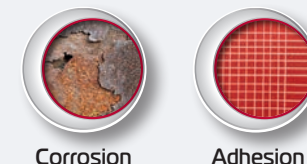


The advantages of Libert Paints' DTS :

- **4 products** for a very wide scope of application.
- **Easy to use!** Can be applied by brush, roller or spray. Electrostatic spraying is also possible.
- **Important time saving:** can be applied wet-on-wet. The second layer can be already applied after 30 minutes. In this way, you also save time having not to rinse the spray equipment and reduce the consumption of solvent and VOC emission
- **Long term protection in many climatic circumstances**
- **High productivity improvement** thanks to a better management of your workshop area and faster painting process.
- **Very good properties** for corrosion protection, chemical resistance, colour and gloss stability
- **Can be tinted on industrial tinting machines** (RAL, NCS, British Standard, ...). Specific colours are available from 1L!
- Can be used as a **one-can-system**
- **Long pot-life**
- DTS products, once applied and fully cured, withstand **temperatures up to 120°C and peak temperatures up to 150°C.**

PROTECTION MADE EASY

The DTS range contains the following products :



Cryltane DTS 20

1L • 4L • 10L



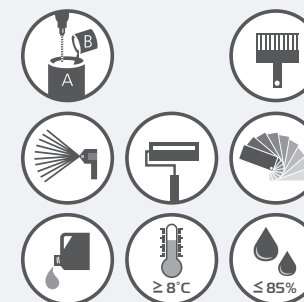
Cryltane DTS 20 is a two-pack mat acrylic polyurethane paint with an excellent adhesion on steel, aluminium, galvanised surfaces, stainless steel, OSB plates, wood, MDF, OSB plates, a lot of plastics (hard PVC, ABS, polyester....) and mineral surfaces (walls, floors).

Cryltane DTS 20 is used as primer and finishing coat in one. It is a good anticorrosion primer based on zinc phosphate. It is weather and chemically resistant. The cured paint film is characterized by a high hardness combined with elasticity.

Cryltane DTS 20 can also be applied by spray as spatter finish on machines, office machinery, and lab equipment. Surface defects can easily be masked when using this technique.

Cryltane DTS 40

1L • 4L • 10L



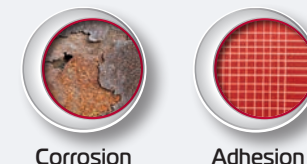
Cryltane DTS 40 is a two-pack low satin acrylic polyurethane paint with an excellent adhesion on steel, aluminium, galvanised surfaces, stainless steel and many plastics.

Cryltane DTS 40 is used as primer and finishing coat at the same time. It is a good anticorrosion primer based on zinc phosphate. It is weather and chemically resistant. The cured paint film is characterized by a high hardness combined with elasticity.

Cryltane DTS 40 can be applied by spray as spattered finish.

PROTECTION MADE EASY

The DTS range contains the following products :



Cryltane DTS 60

1L • 4L • 10L



Cryltane DTS 60 is a semi-gloss two-pack acrylic polyurethane paint with an excellent adhesion on steel, aluminium, galvanised surfaces, stainless steel and many plastics.

Cryltane DTS 60 is used as primer and finishing coat at the same time. It is a good anticorrosion primer based on zinc phosphate. It is weather and chemically resistant. The cured paint film is characterized by a high hardness combined with elasticity.

Cryltane DTS 60 can be applied by spray as spatter finish.

Cryltane DTS 80

1L • 4L



Cryltane DTS 80 is a gloss two-pack acrylic polyurethane paint with an excellent adhesion on steel, aluminium, galvanised surfaces, stainless steel and many plastics.

Cryltane DTS 80 is used as primer and finishing coat at the same time. It is a good anticorrosion primer based on zinc phosphate. It is weather and chemically resistant. The cured paint film is characterized by a high hardness combined with elasticity.

Cryltane DTS 80 can be applied by spray as spatter finish.

PROTECTION MADE EASY

Overview of our technical specifications :



Libert Paints has a long tradition of intensive laboratory research. All our DTS products are developed in-house and tested before being delivered to the customer. Many of the tests were done in-house with our own measuring equipment. Other tests are made by external laboratories such as WTCB, CORI, Unifap, ... This way, we continuously challenge ourselves to try to develop the ideal products for you. Detailed test reports are available on request.

Thanks to our years of experience as paint manufacturer and our many references with our DTS, we can recommend you this high performance paint with confidence.

PROTECTION MADE EASY

 **Libert**
industrial paints

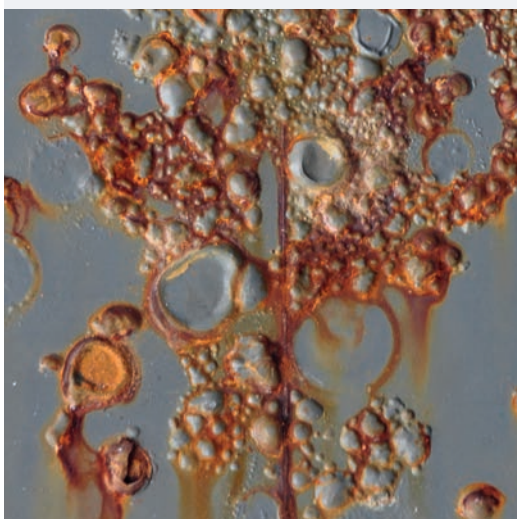
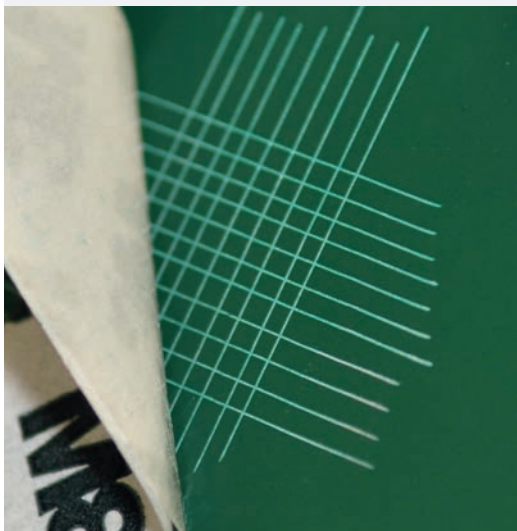
Overview of our technical specifications :



	Cryltane DTS 20	Cryltane DTS 40	Cryltane DTS 60	Cryltane DTS 80
Gloss Gardner 60°	20 (± 5)	40 (± 10)	60 (± 10)	80 (± 10)
Density	1.40 ± 0.05 g/ml	1.35 ± 0.05 g/ml	1.33 ± 0.05 g/ml	1.45 ± 0.05 g/ml
Potlife at 20°C	± 5 h	± 6 h	± 6 h	± 5 h
Solids content				
• In volume	60 ± 2%	60 ± 2%	62 ± 2%	76 ± 2%
• in weight	74 ± 2%	75 ± 2%	74 ± 2%	58 ± 2%
VOC				
• Undiluted	< 370 g/L	< 377 g/L	< 355 g/L	350 g/L
Droogtijden bij 20°C				
• Dustdry	30 mins	40 mins	40 mins	45 mins
• Tackfree	3 h	5 h	4 h	5 h
• Dry	12 h	14 h	12 h	12 h
Recoatable after (brush - roller)	16-24 h	16-24 h	16-24 h	16-24 h
Recoatable after (spray only)	30-45 mins or after 12 h	30-45 mins or after 12 h	30-45 mins or after 12 h	30-45 mins or after 12 h
Max. laagdikte µm droog	100	100	100	100
Glans- en kleurbehoud	Good	Very good	Very good	Very good

PROTECTION MADE EASY

Overview of our technical specifications :



	Cryltane DTS 20	Cryltane DTS 40	Cryltane DTS 60	Cryltane DTS 80
Maximum dry film thickness in μm	100	100	100	100
Stability of colour and gloss	Good	Very Good	Very good	Very good
Adhesion on : <ul style="list-style-type: none"> • Iron and steel • Galvanisation • PVC • Inox • Aluminium 	Very good Very good	Very good Very good	Very good Very good	Very good Very good (after sanding) Very good Very good (after sanding)
Scratch resistance	Good	Very good	Very good	Very good
Theoretical yield (60 μm dry)	10 m^2/L	10 m^2/L	10 m^2/L	10 m^2/L

For a more detailed overview, please do not hesitate to ask our technical data sheets or test reports.

PROTECTION MADE EASY



Application areas :

- Agricultural machines
- Energy facilities
- External facilities
- Cranes
- Oil & gas
- Cladding & roofing
- Water theme parks

PROTECTION MADE EASY



Application areas :

- Foot-over-bridges
- OEM-machines
- Transport: railways, trucks, buses
- Street furniture



PROTECTION MADE EASY



For further information about Libert Paints:
contact our sales and technical
representatives

LIBERT PAINTS n.v.

Haven 8210A | Langerbruggekaai 6 | 9000 Gent

T: +32 (0)9 216 88 70

F: +32 (0)9 226 61 81

info@libertpaints.com

www.libertpaints.com

PROTECTION MADE EASY

 **Libert**
industrial paints